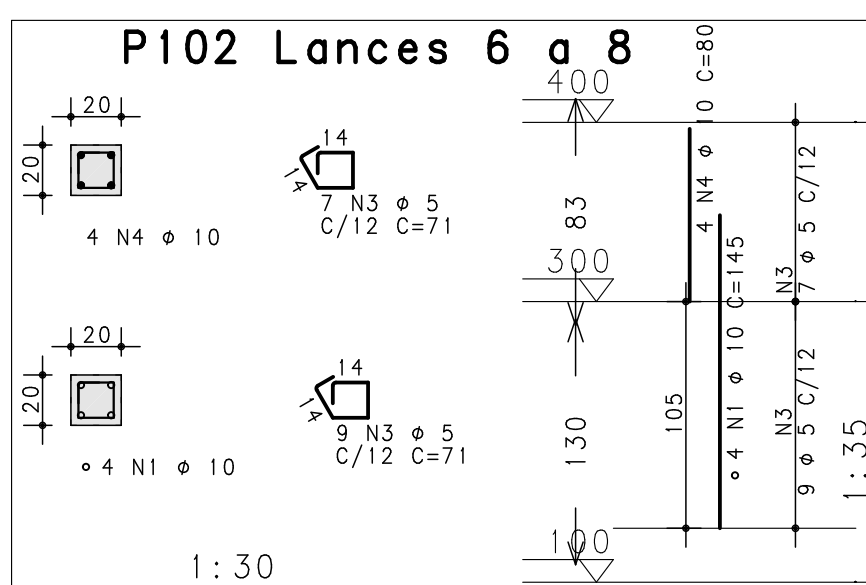
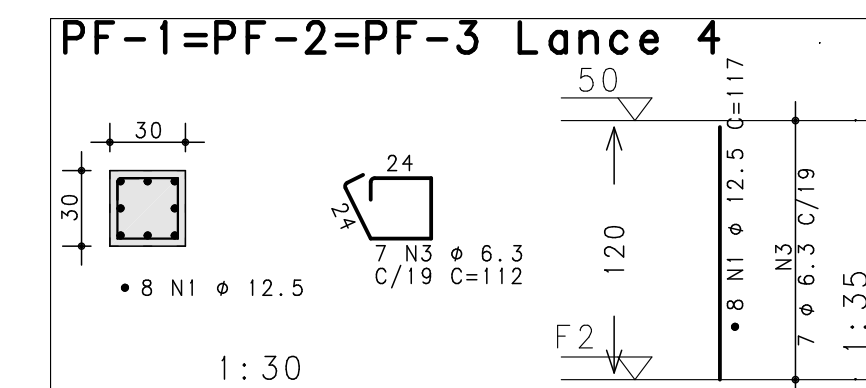
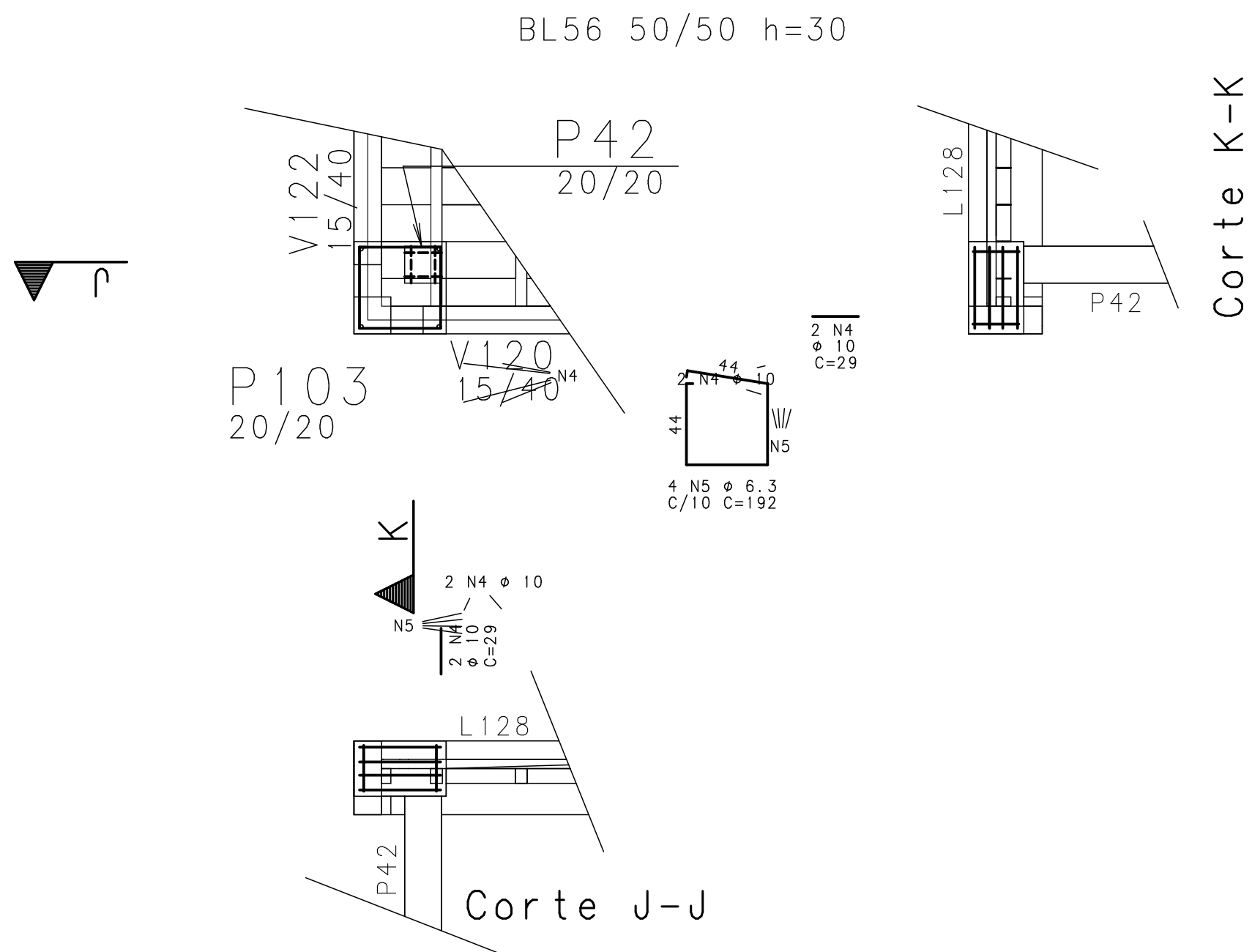
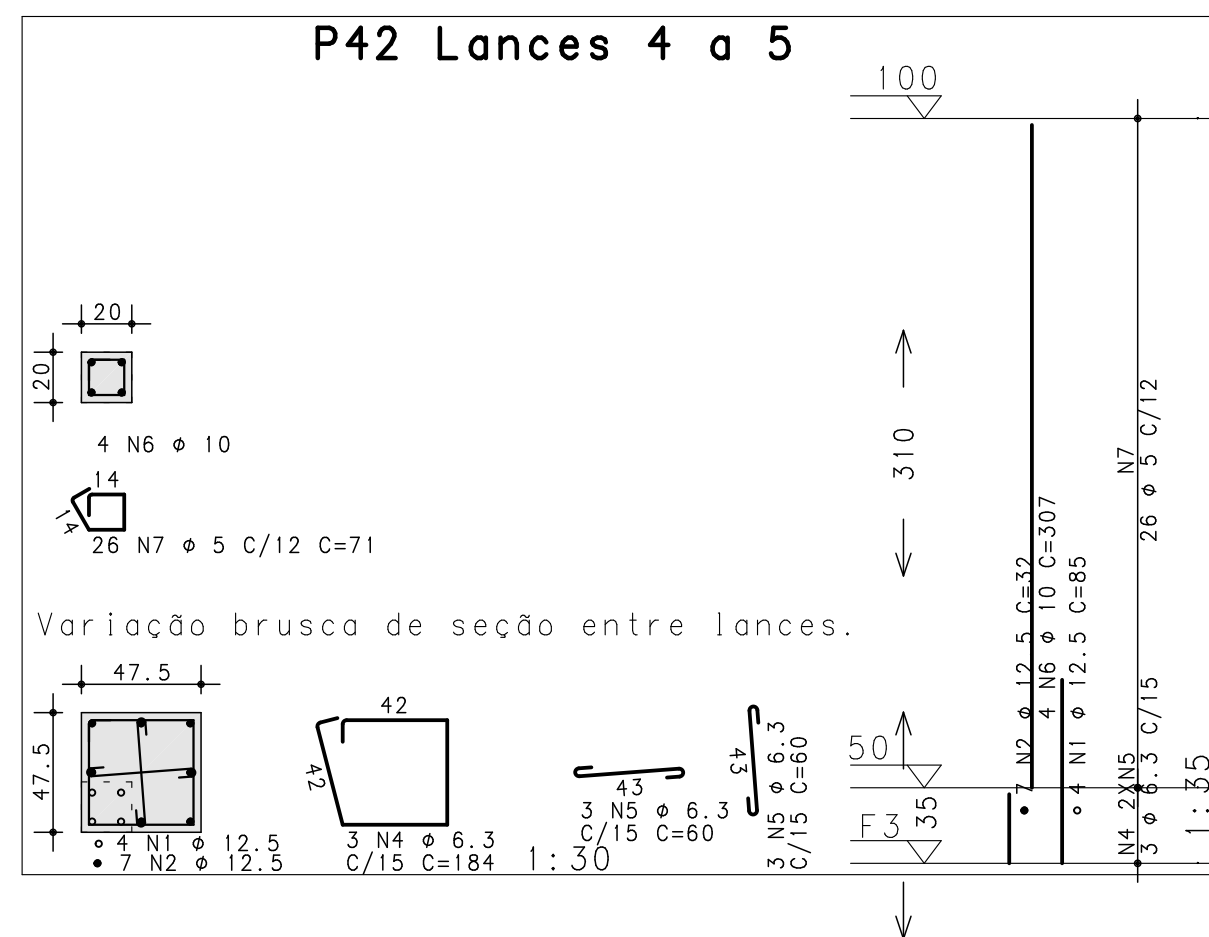
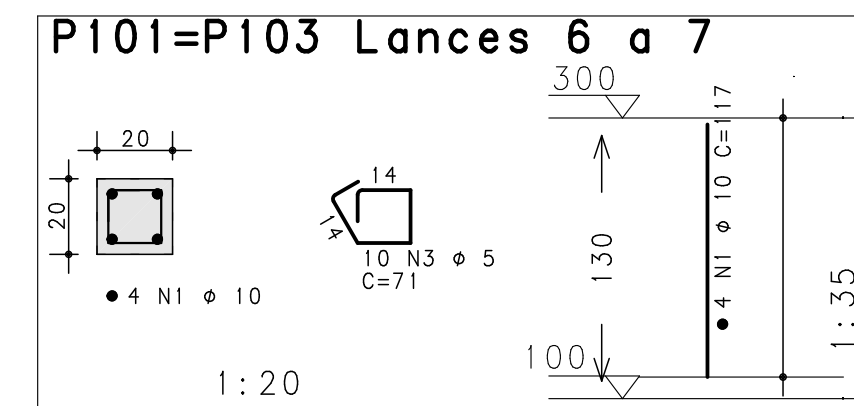
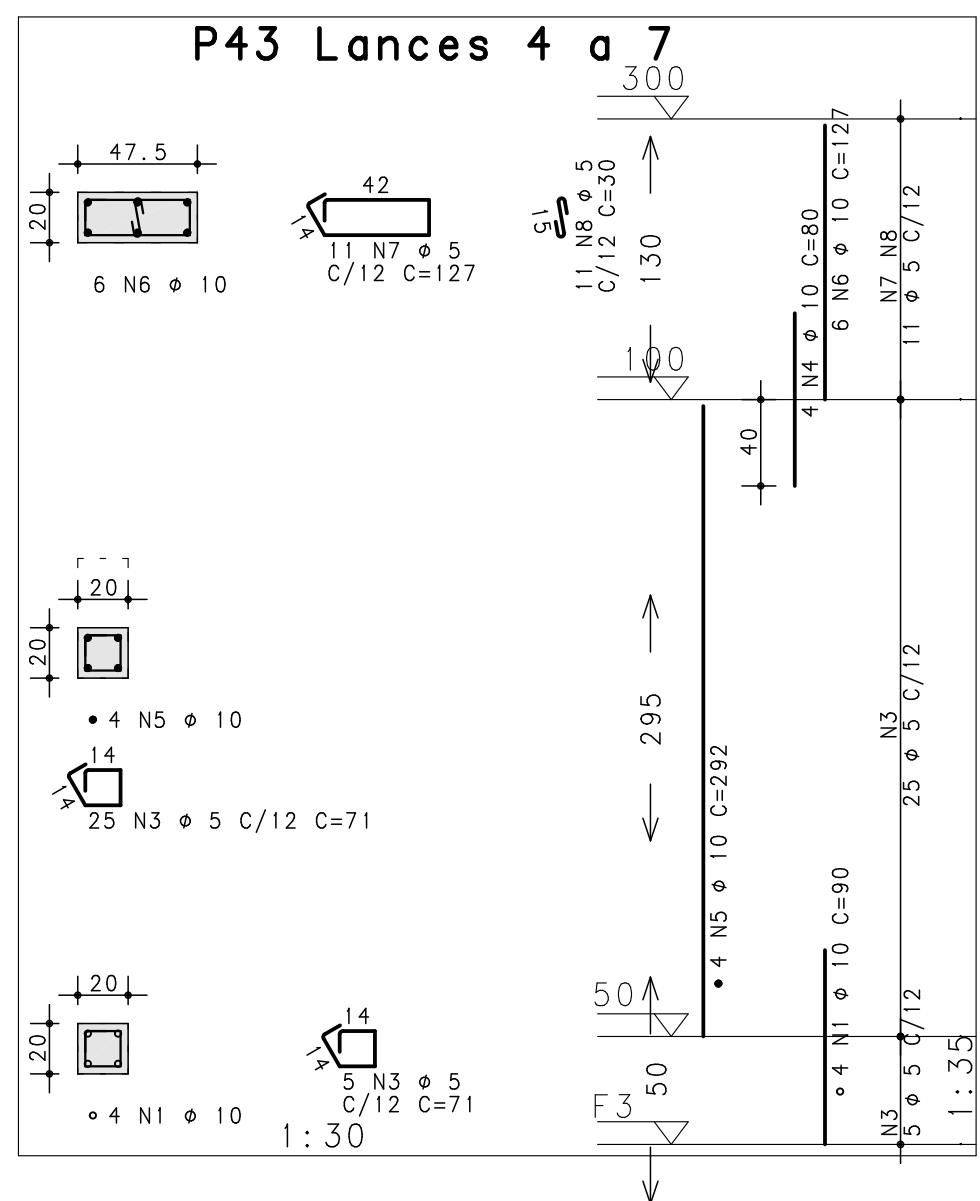
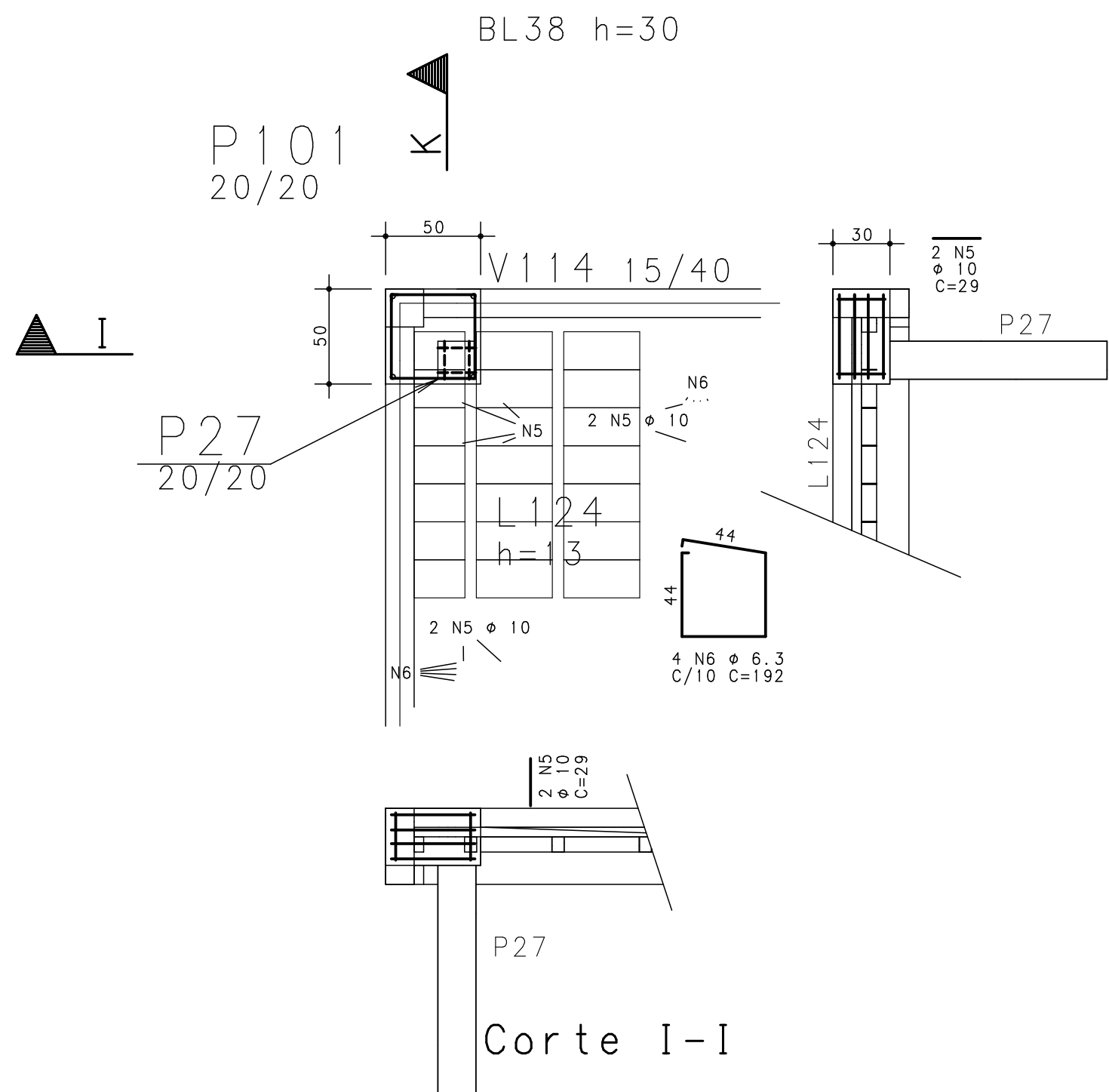
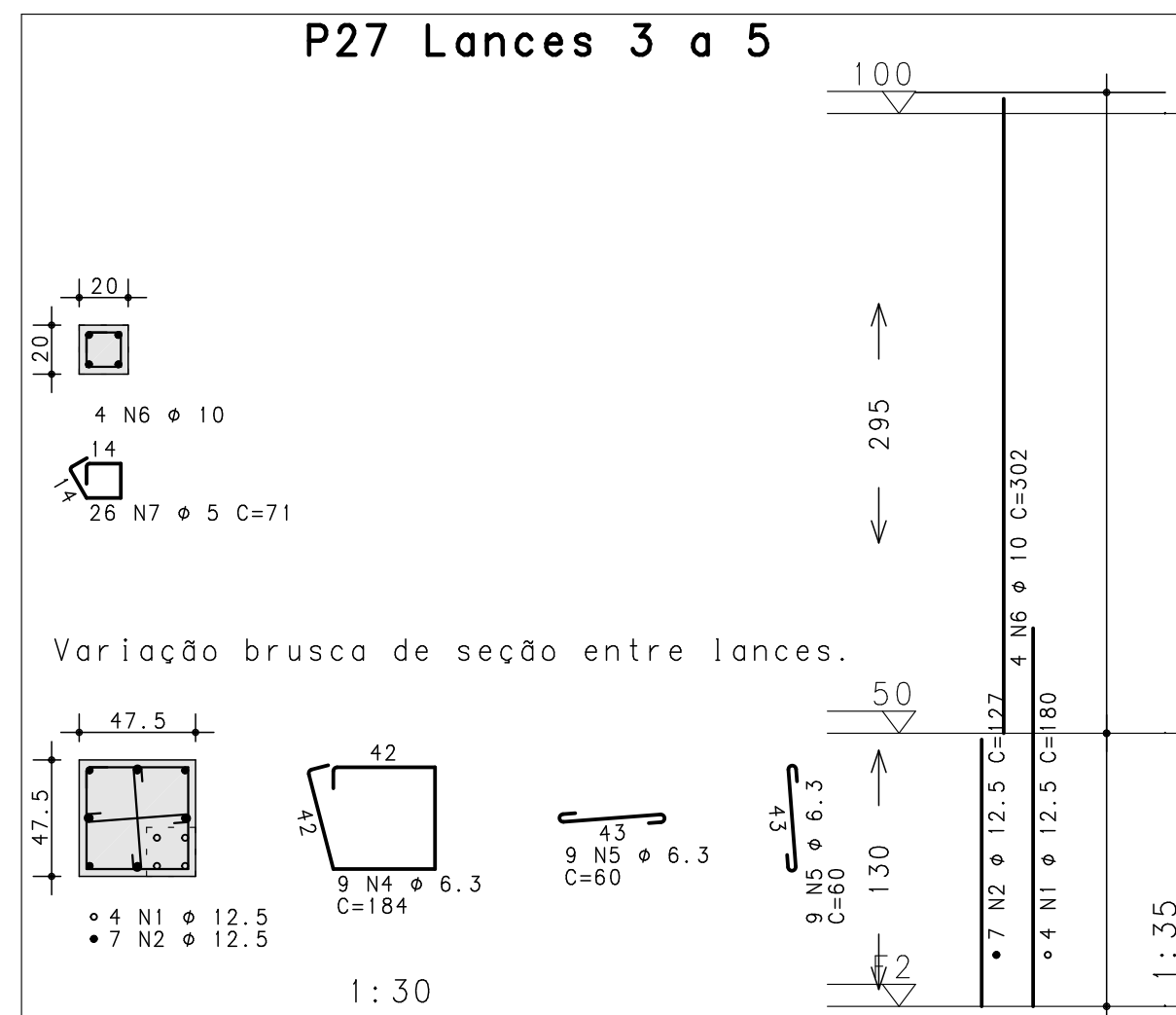
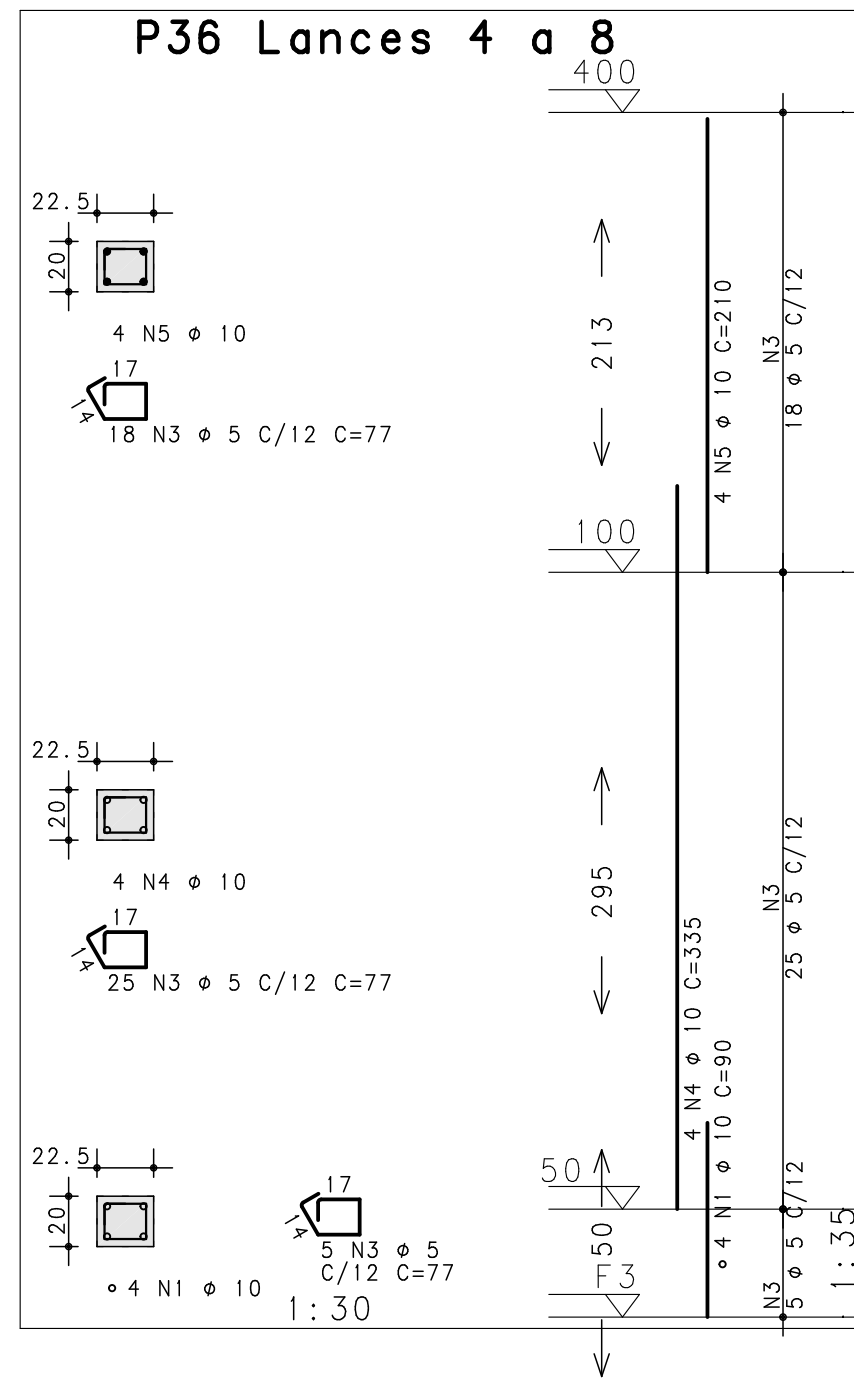
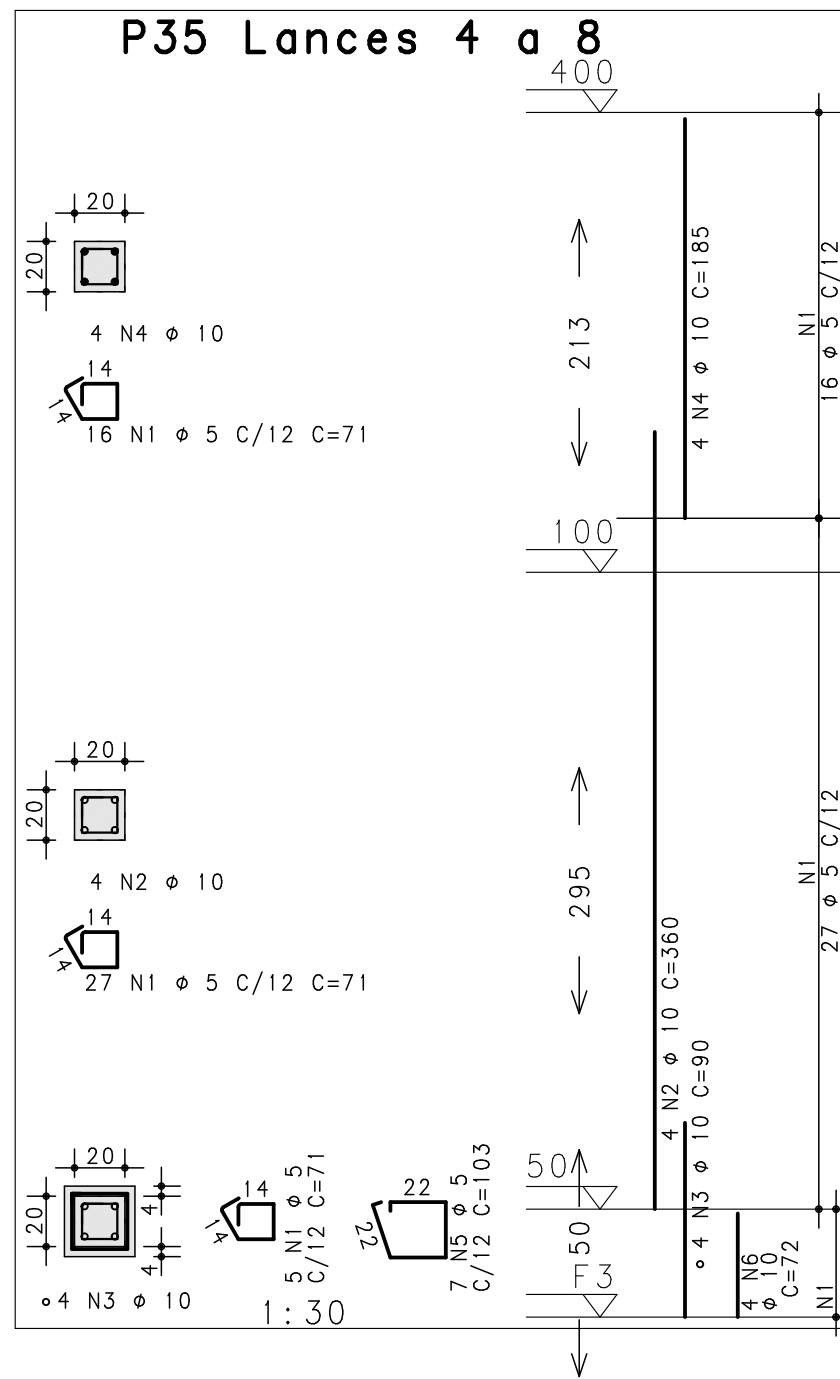
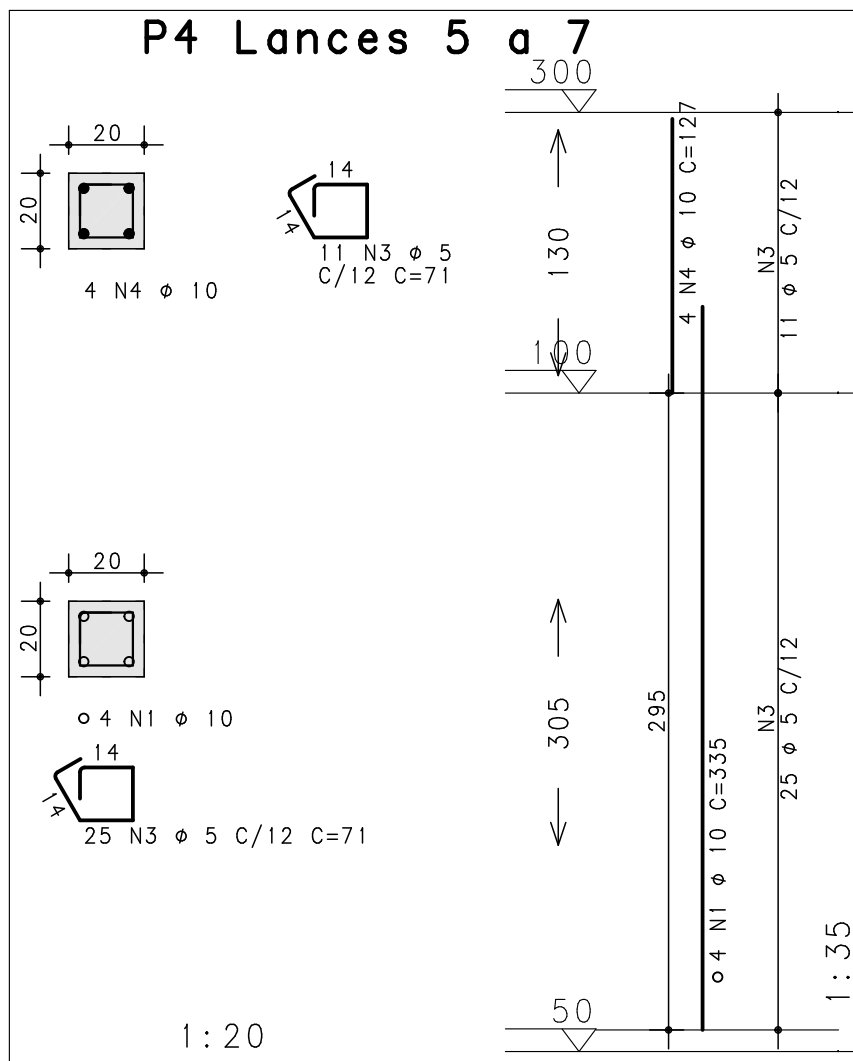
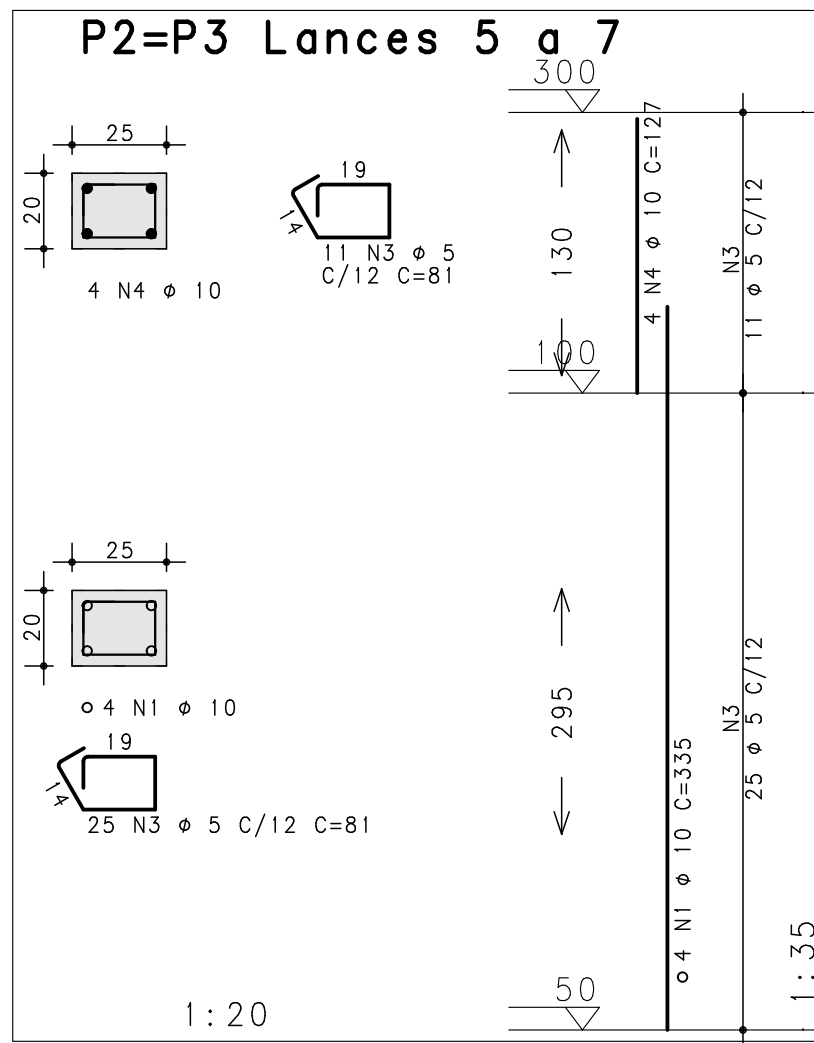
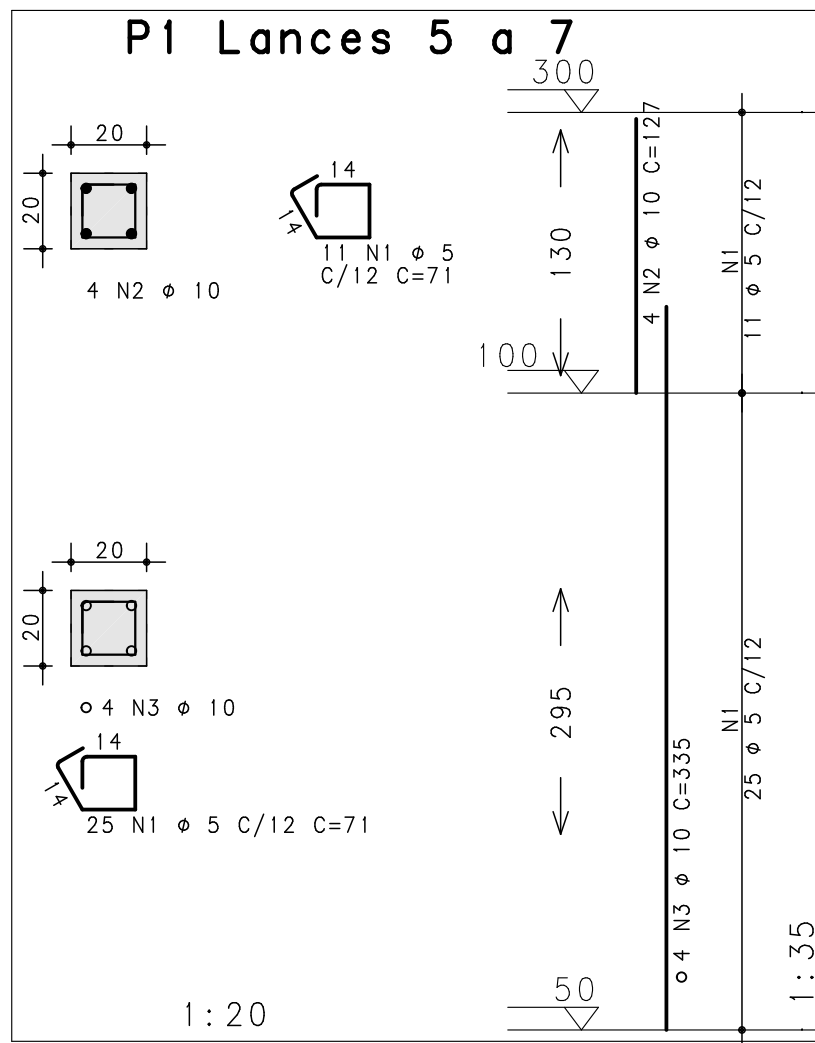


GIGANTE & SIMCH ENGE E COMERCIO LTDA PL UBS-PIL-PIL-011-R00-PLY 30/08/2016 23:05:34



AÇO	POS	BIT (mm)	QUANT	COMPRIMENTO	
				UNIT (cm)	TOTAL (cm)
P27 Lances 3 a 5					
50A	1	12.5	4	180	720
50A	2	12.5	7	127	889
50A	4	6.3	9	184	1656
50A	5	6.3	18	60	1080
50A	6	10	4	302	1208
60B	7	5	26	71	1846
PF-1=PF-2=PF-3 Lance 4 (X3)					
50A	1	12.5	24	117	2808
50A	3	6.3	21	112	2352
P35 Lances 4 a 8					
60B	1	5	48	71	3408
50A	2	10	4	360	1440
50A	3	10	4	90	360
50A	4	10	4	185	740
60B	5	5	7	103	721
50A	6	10	4	72	288
P36 Lances 4 a 8					
50A	1	10	4	90	360
60B	3	5	48	77	3696
50A	4	10	4	335	1340
50A	5	10	4	210	840
P42 Lances 4 a 5					
50A	1	12.5	4	85	340
50A	2	12.5	7	32	224
50A	4	6.3	3	184	552
50A	5	6.3	6	60	360
50A	6	10	4	307	1228
60B	7	5	26	71	1846
P43 Lances 4 a 7					
50A	1	10	4	90	360
60B	3	5	30	71	2130
50A	4	10	4	80	320
50A	5	10	4	292	1168
50A	6	10	6	127	762
60B	7	5	11	127	1397
60B	8	5	11	30	330
P1 Lances 5 a 7					
60B	1	5	36	71	2556
50A	2	10	4	127	508
50A	3	10	4	335	1340
P2=P3 Lances 5 a 7 (X2)					
50A	1	10	8	335	2680
60B	3	5	72	81	5832
50A	4	10	8	127	1016
P4 Lances 5 a 7					
50A	1	10	4	335	1340
60B	3	5	36	71	2556
50A	4	10	4	127	508
P101=P103 Lances 6 a 7 (X2)					
50A	1	10	8	117	936
60B	3	5	20	71	1420
P102 Lances 6 a 8					
50A	1	10	4	145	580
60B	3	5	16	71	1136
50A	4	10	4	80	320

RESUMO AÇO CA 50-60			
AÇO	BIT (mm)	COMPR (m)	PESO (kg)
60B	5	289	44
50A	6.3	60	15
50A	10	196	121
50A	12.5	50	48
Peso Total		60B =	44 kg
Peso Total		50A =	184 kg

P1 Lances 5 a 7
P2=P3 Lances 5 a 7
P4 Lances 5 a 7
P27 Lances 3 a 5
P35 Lances 4 a 8
P36 Lances 4 a 8
P42 Lances 4 a 5
P43 Lances 4 a 7
P101=P103 Lances 6 a 7
P102 Lances 6 a 8
PF-1=PF-2=PF-3 Lance 4



Rua Quinze de Novembro, 263/405
Pelotas - RS - CEP 96201-5000
Telefone: (51) 32291500
e-mail: fernando@simch.com.br
e-mail: paulo@simch.com.br

Fernando Petrucci Gigante
Eng. Civil - CREA-RS 45232

Paulo Rogério Maffini Simch
Eng. Civil - CREA-RS 78208

2			
1			
0			
Rev	Data	Autor	Assunto

CONCRETO fck = 200 kgf/cm2		SOBRECARGA PREVISTA		OBRA N.º 0001
CLIENTE SECRETARIA DA SAÚDE-PELOTAS				DES. N.º
OBRA UBS TIPO 2-CORRIENTES				011
TÍTULO PILARES ARMADURAS DOS PILARES				REV. N.º 00
DATA 23/08/2016	ESCALA Indicada	DESENHO UBS-PIL-PIL-011-R00	COORD.	ENG.º